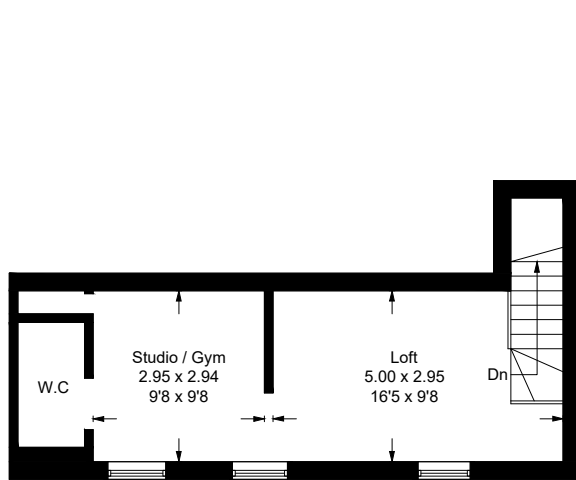


Barsby House, Osgathorpe

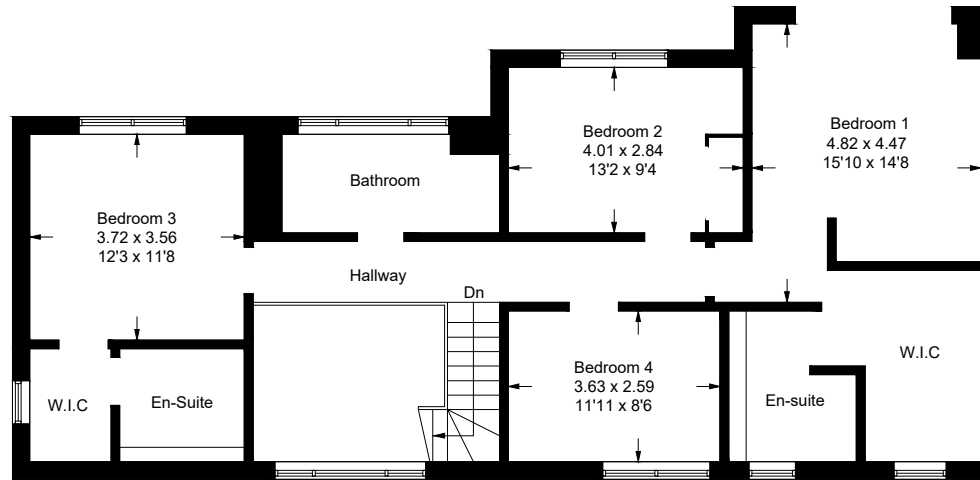
Approximate Gross Internal Area = 259 sq m / 2797 sq ft

Garage / Storage = 40 sq m / 432 sq ft

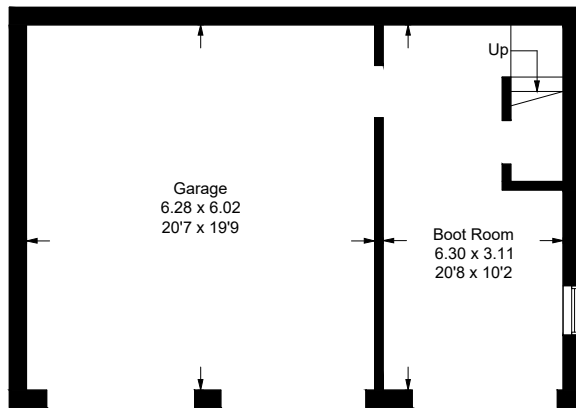
Total = 299 sq m / 3229 sq ft



First Floor

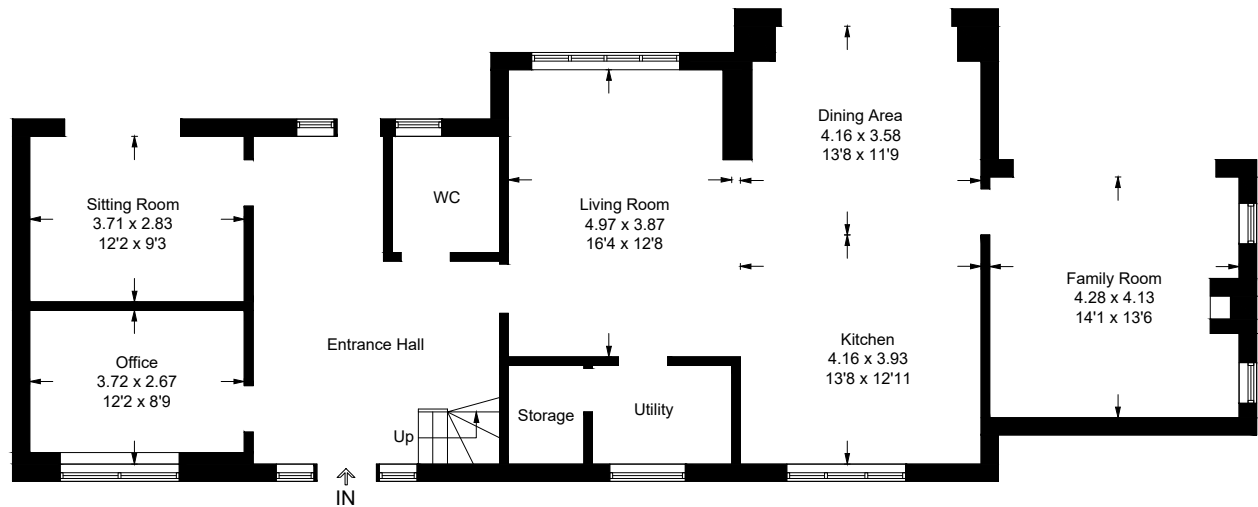


First Floor



Ground Floor

(Not Shown In Actual Location / Orientation)



Ground Floor

Illustration for identification purposes only, measurements are approximate, not to scale. Fourlabs.co © (ID1300029)

